

# 15795 N. 76TH STREET

www.CornwellCorporation.com



**13,469 SQ. FT.**

## Your new Scottsdale Airpark office/warehouse location

### Area

This first-class office/warehouse project is located in the Scottsdale Airpark. Convenient to Kierland Commons and the Scottsdale Quarter for shopping and restaurants. It is beautifully landscaped and ideal for a large spectrum of businesses.

### Location

This building is located just north of the Greenway-Hayden Loop on 76th Street in the Scottsdale Airpark.

### Facility Amenities

- 800a/277-480v 3 p
- Single tenant building

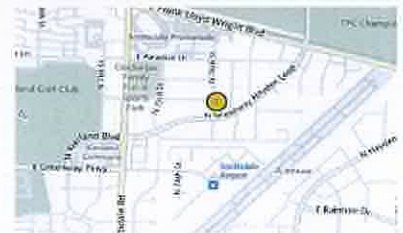
- Fenced-in rear yard with rolling gate
- Fully air conditioned
- T1 lines with redundant fibre
- Approximately 18' clear height
- Two 12' x 14' overhead doors
- Fully sprinklered
- Truckwell capability
- 

### Offered Lease Rate

**\$1.10 SF NNN**

### Improved Space:

- See attached floor plan for existing layout



**CORNWELL**  
CORPORATION

Please Contact:  
**DARLINE TURNER**

Office: (480) 951-1212 x 102  
Cell: (480) 236-6600  
Fax: (480) 951-3027

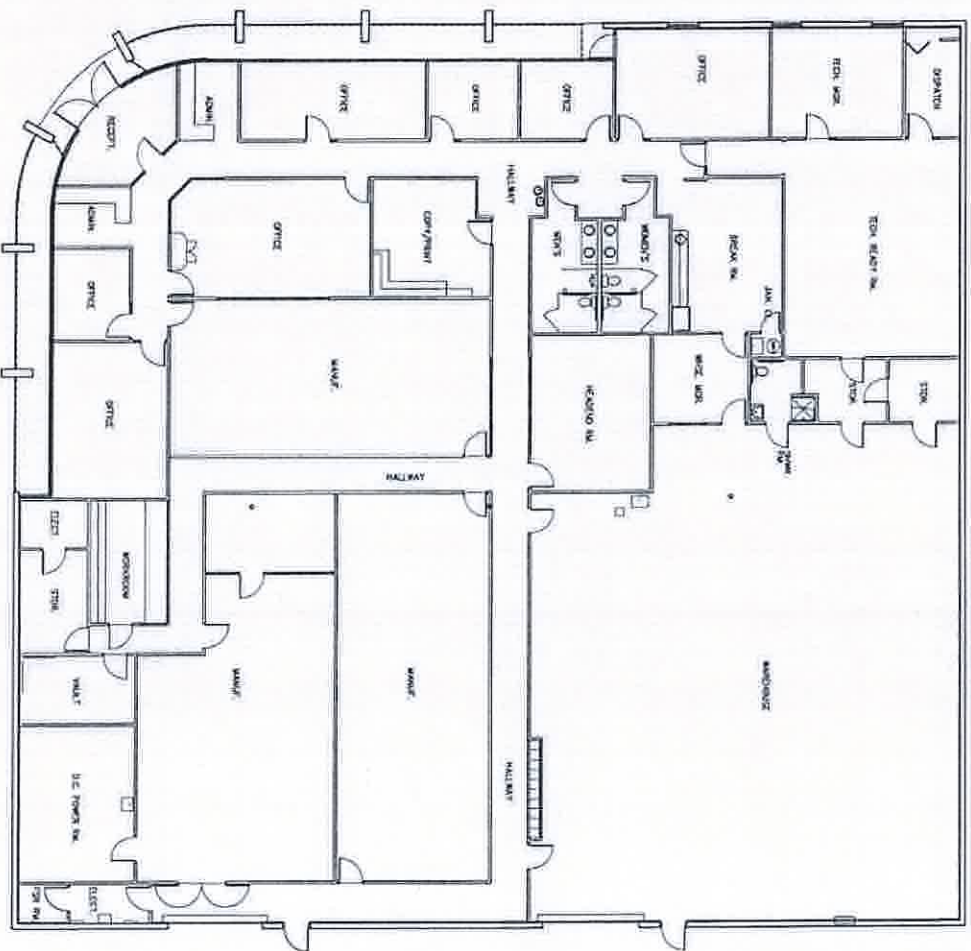
[dturner@cornwellcorporation.com](mailto:dturner@cornwellcorporation.com)

**Great Scottsdale Airpark  
Location**

**Cornwell Corporate Offices**  
14851 N. Scottsdale Road,  
Suite 203  
Scottsdale, Arizona 85254

# Existing Plan

Cornwell Corporation  
15795 North 76th Street  
Scottsdale, Arizona



**Floor Plan**  
scale: 1/16" = 1'-0"

